

Content and Language Objective:
SWBAT write slope-intercept equations from a graph or given the slope and the y-intercept.

Setup Notes

Lesson 13: Equations in Y-Intercept Form Using Graphs

Date: October 1, 2015

PLANNER:

- 1. Study for the Week 6 quiz**
- 2. Prepare binder for binder check tomorrow**

Content and Language Objective:

SWBAT write slope-intercept equations from a graph or given the slope and the y-intercept.

Warm-Up

1. Convert $y - 3 = -2(x + 3)$ to y-intercept form.

$$\begin{array}{r} y - 3 = -2x + -6 \\ +3 \quad \quad +3 \\ \hline \quad \quad -3 \end{array}$$

$$y = -2x + -3$$

$$y = -2x - 3$$

Content and Language Objective:

SWBAT write slope-intercept equations from a graph or given the slope and the y-intercept.

Given the following equations find the slope and y-intercept

$$y = mx + b$$

1. $y = 3x + 5$

$$m = 3$$

$$b = 5$$

3. $9 + 2x = y$

$$m = 2$$

$$b = 9$$

2. $y = -4x - 7$

$$m = -4$$

$$b = -7$$

4. $y = -10 - 6x$

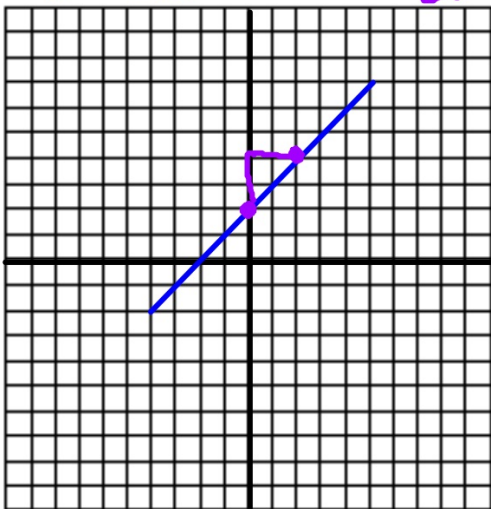
$$m = -6$$

$$b = -10$$

Content and Language Objective:

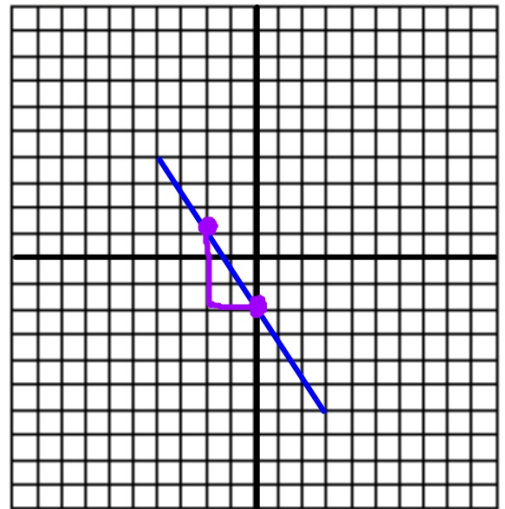
SWBAT write slope-intercept equations from a graph or given the slope and the y-intercept.

$$b=2 \quad m=\frac{2}{2}=1$$



$$y = x + 2$$
$$y = x + 2$$

$$b=-2 \quad m=-\frac{3}{2}$$

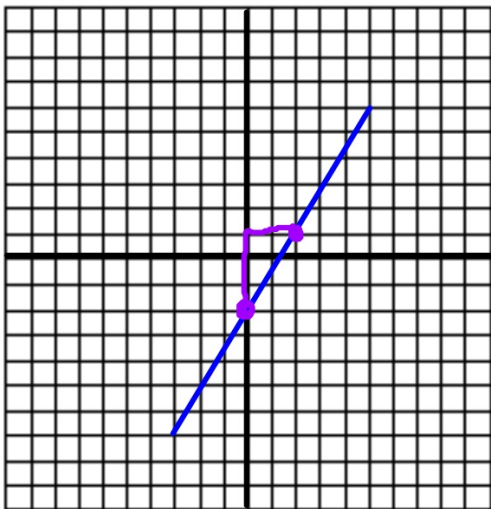


$$y = -\frac{3}{2}x - 2$$

Content and Language Objective:

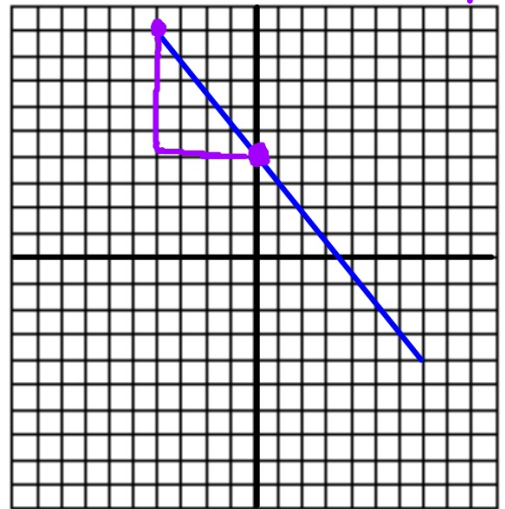
SWBAT write slope-intercept equations from a graph or given the slope and the y-intercept.

$$b = -2 \quad m = \frac{3}{2}$$



$$y = \frac{3}{2}x - 2$$

$$b = 4 \quad m = -\frac{5}{4}$$



$$y = -\frac{5}{4}x + 4$$

Content and Language Objective:
SWBAT write slope-intercept equations from a graph or given the slope and the y-intercept.
